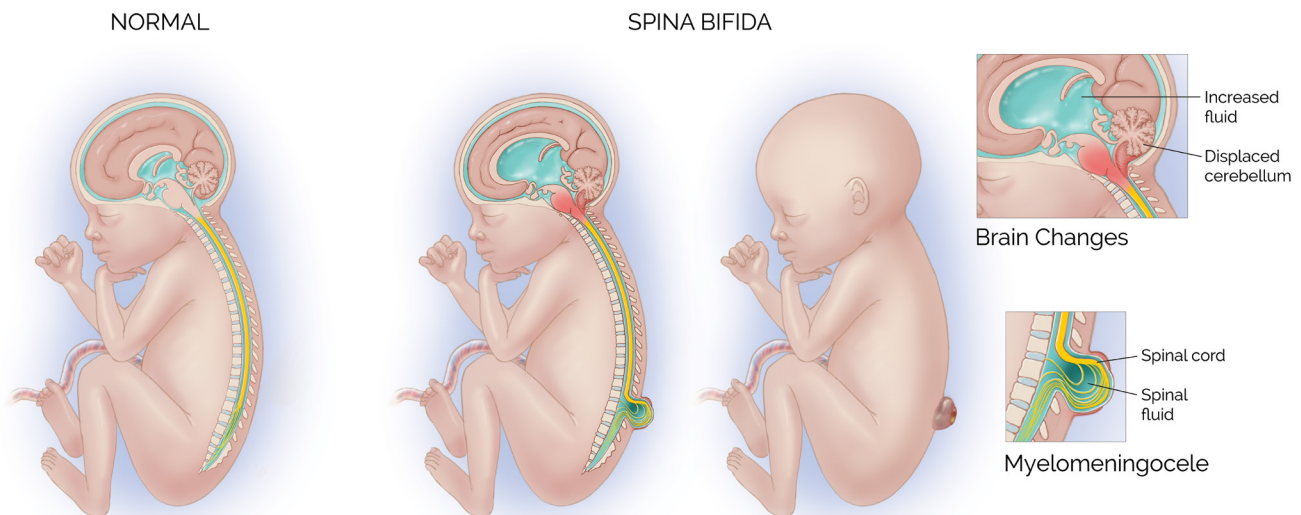


## Fetal Spina Bifida

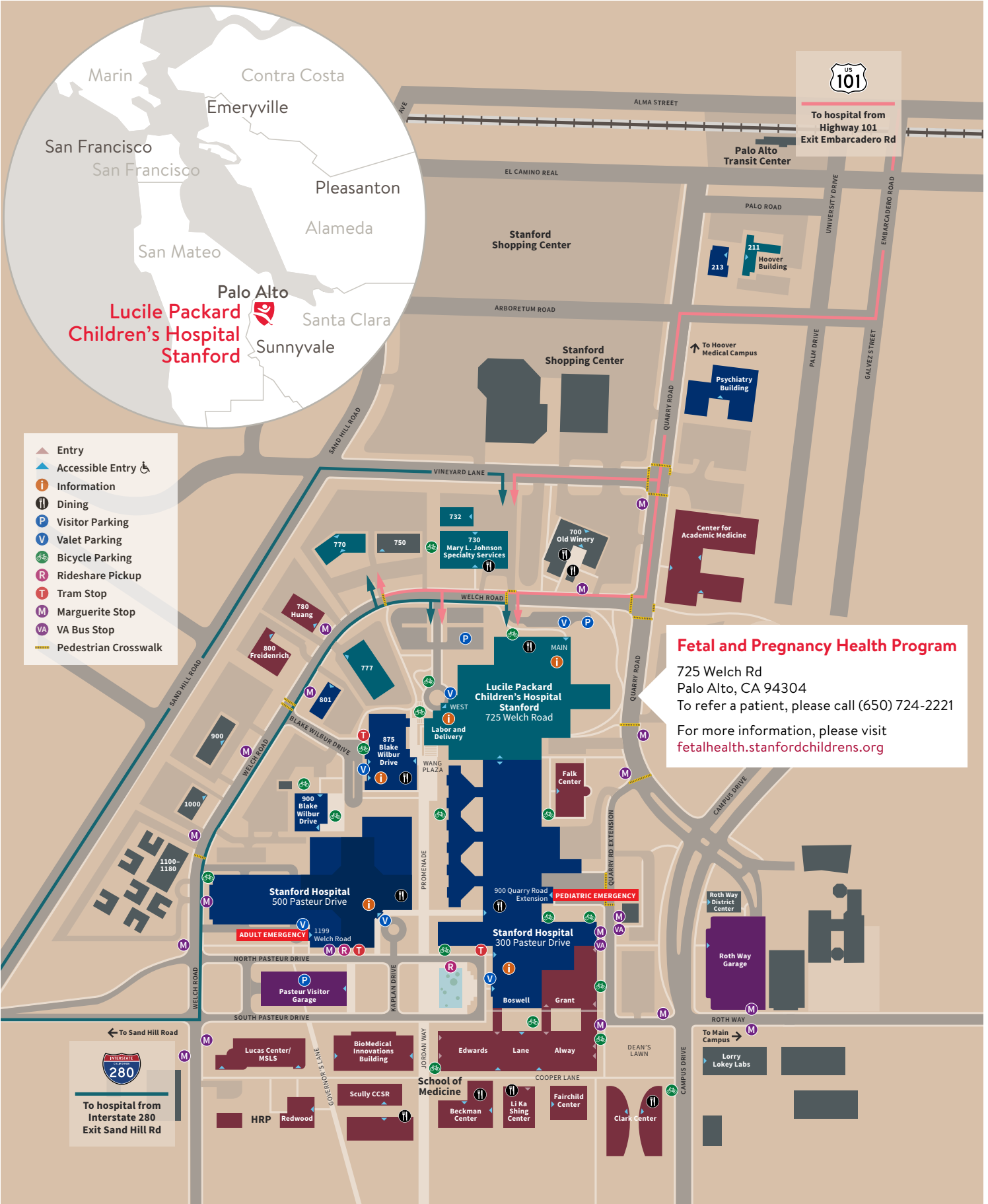
The Fetal and Pregnancy Health Program at Stanford Medicine Children's Health provides multidisciplinary evaluation and consultation for fetal spina bifida with maternal–fetal medicine, pediatric radiology, neonatology, perinatal genetics, pediatric neurosurgery and pediatric surgery specialists. We are the only program in California to offer multidisciplinary in-utero fetoscopic neural tube defect repair under an IRB protocol with FDA oversight, and we also offer an ongoing multispecialty surgical simulation program.

<b>Benefits of in-utero repair</b>	<ul style="list-style-type: none"> <li>• Decreased need for postnatal ventriculoperitoneal shunt</li> <li>• Improved lower motor function</li> </ul>
<b>Potential benefits of fetoscopic repair over open repair</b>	<ul style="list-style-type: none"> <li>• 2–3 small uterine ports versus hysterotomy</li> <li>• Potential for vaginal trial of labor</li> <li>• Potential for longer gestation</li> </ul>
<b>Criteria for fetoscopic in-utero repair (MOMS study criteria)</b>	<ul style="list-style-type: none"> <li>• Isolated spinal lesion starting at or above S1</li> <li>• Chiari II malformation (cerebellar hernia into the foramen magnum)</li> <li>• Surgery must be performed before 25 6/7 weeks</li> <li>• Normal karyotype or microarray testing</li> <li>• Maternal BMI &lt;35</li> <li>• No contraindications to in-utero surgery</li> </ul>



Post-surgery pregnancy management and delivery occurs at Lucile Packard Children's Hospital Stanford, with ongoing pediatric follow-up at a designated multidisciplinary spina bifida clinic.

**To refer a patient, please call (650) 724-2221.**



Lucile Packard  
Children's Hospital  
Stanford

- ▲ Entry
- ▲ Accessible Entry ♿
- i Information
- 🍴 Dining
- P Visitor Parking
- V Valet Parking
- 🚲 Bicycle Parking
- R Rideshare Pickup
- T Tram Stop
- M Marguerite Stop
- VA VA Bus Stop
- Pedestrian Crosswalk

**Fetal and Pregnancy Health Program**

725 Welch Rd  
Palo Alto, CA 94304  
To refer a patient, please call (650) 724-2221  
For more information, please visit [fetalhealth.stanfordchildrens.org](http://fetalhealth.stanfordchildrens.org)